

SURFACE ACQUISITION SYSTEMS

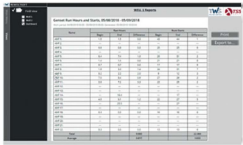
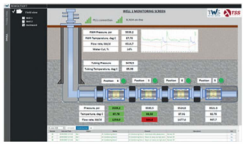
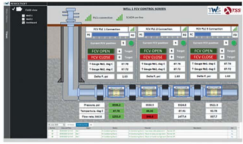


APPLICATION

The Surface Acquisition System is a fully featured technology. It consists of the hardware and software required to record, display, store and transmit various downhole tools data. The data is obtained through downhole tools as well as can be used for obtaining surface equipment. This system sets downhole valves operations.

Permanent gauges data, DTS data, RWD data collects at surface unit and its displayed in the REWOLTSOFT™ software. The system's functionality is increased by using a digital signal processor. This system supports data from many different tool manufacturers.

The Portable Acquisition Systems can be made in a waterproof case and used for short period data collection and/or tools managing in field. This system is fully customizable to meet Client's needs.



FEATURES AND BENEFITS

- Long-term real-time monitoring of downhole operational parameters and real-time flow management.
- Short-term real-time monitoring and flow management.
- Ability to connect multiple tools including downhole equipment and surface equipment.
- Fully customizable to meet Client's needs.